

PER MONTH

£2,400 Per Month

Roman Road

London, E2 0HJ

Set within a small purpose built block overlooking Bethnal Green Gardens in the 2 bedroom apartment.

Spread over 2 floors the property features a bright reception room with direct views over the park, modern separate kitchen and ample storage. The 1st floor has 2 double bedrooms and a contemporary fitted bathroom with walk in shower.

Bethnal Green and neighbouring Shoreditch have benefited from much regeneration over recent decades; renovated warehouses, independent shops, artisan coffee houses, highly rated restaurants and reclaimed vintage stores have made the area a popular place to own a property and a favourite destination for visitors. Columbia Road Flower Market, Spitalfields and Whitechapel are all close by as well as Westfield Stratford shopping centre and some fantastic green escapes further afield - Haggerston Park, London Fields, Queen Elizabeth's Olympic Park, and Victoria Park - voted London's favourite outdoor space.

The property is very well located, just a few moments from Bethnal Green Underground Station and a short walk to Victoria Park, the capital's favourite green space among Londoners, Broadway Market and Brick Lane.

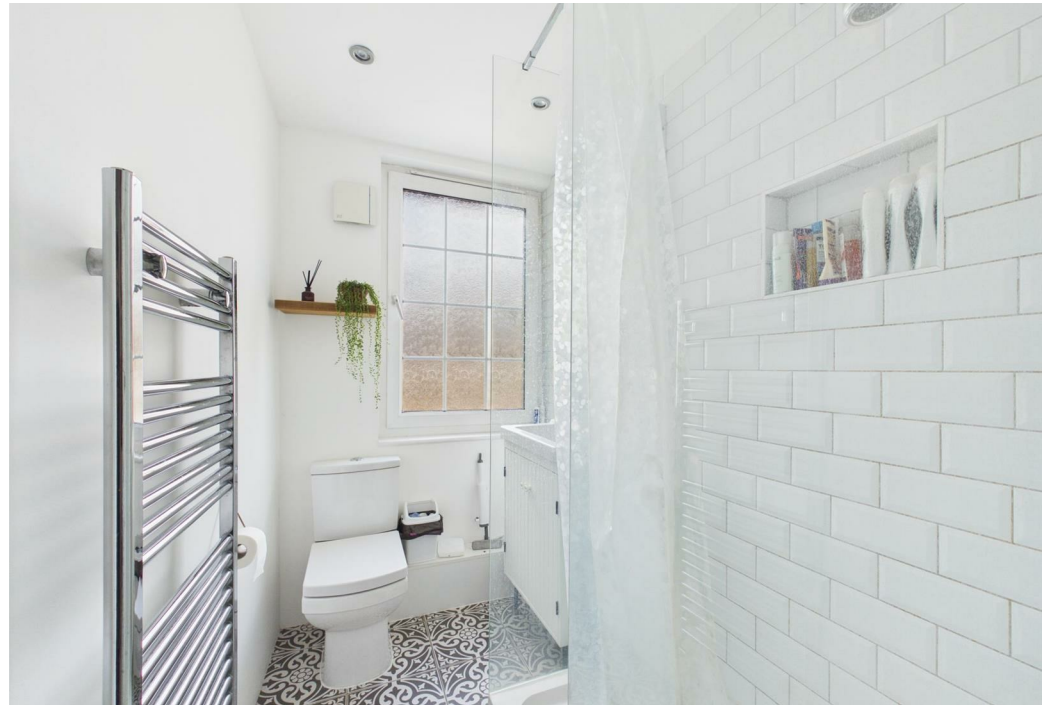
Unfurnished

Available: June

5 weeks deposit: £2769.23

Council Tax: Band C







Floor 0



Floor 1



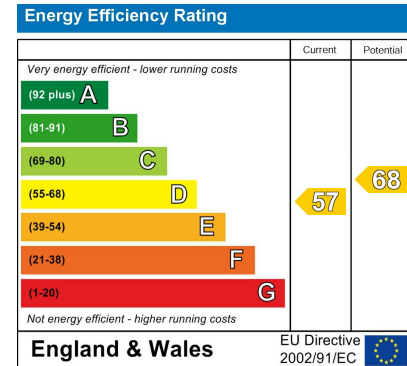
Approximate total area⁽¹⁾

51.8 m²
558 ft²

(1) Excluding balconies and terraces

Calculations reference the RICS IPMS 3C standard. Measurements are approximate and not to scale. This floor plan is intended for illustration only.

GIRAFFE360



Agents Note: Whilst every care has been taken to prepare these particulars, they are for guidance purposes only. All measurements are approximate and are for general guidance purposes only and whilst every care has been taken to ensure their accuracy, they should not be relied upon and potential buyers/tenants are advised to recheck the measurements

OFFICE ADDRESS
88 Cheshire Street
London
E2 6EH

OFFICE DETAILS
0207 739 6969
info@peachproperties.com
www.peachproperties.com